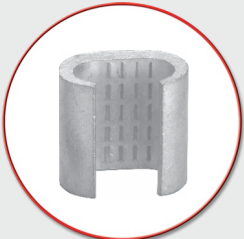
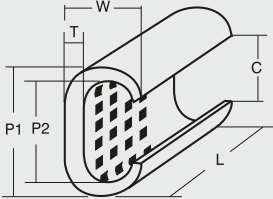


**C Clamp**

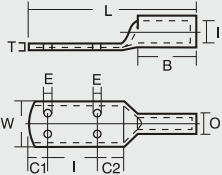
- Electrolytic high conductivity copper
- Electro tinned plated



Connector Size	Dimensions mm					
	P1	P2	W	L	T	C
CC - 11	9.5	6.3	6.2	12	1.6	4.0
CC - 16	11.8	7.8	7.8	13	2.0	5.0
CC - 20	12.8	8.4	9.7	13	2.9	5.1
CC - 26	14.7	10.2	10.9	16	3.2	6.5
CC - 44	19.0	13.4	14.4	20	4.0	8.5
CC - 60	21.0	15.4	15.1	22	4.0	9.7
CC - 76	24.4	17.3	17.6	22	5.0	10.8
CC - 98	27.8	20.8	18.8	25	5.0	13.8
CC - 122	29.8	22.1	21.2	26	5.5	13.5
CC - 154	34.0	25.7	24.4	28	6.0	17.0
CC - 190	37.0	28.5	25.4	35	6.0	17.4
CC - 240	40.0	30.2	28.5	40	7.0	19.0
CC - 288	44.5	34.7	31.1	45	7.0	22.3
CC - 365	47.5	37.7	34.0	50	7.0	24.8
CC - 450	57.0	42.5	41.0	60	10.0	28.0
CC - 560	62.0	46.0	45.0	65	11.0	31.0
CC - 700	68.0	51.0	49.5	70	12.0	34.0

**Tubular Cable Lugs Standard Type Four Hole**

- Electrolytic high conductivity copper
- Electro tinned plated
- With inspection hole



Product Ref.	Conductor Section mm <sup>2</sup>	Dimensions mm								
		I	B	W	E	O	C1	C2	L	T
CST4-300	300	23.5	42	58	8.5	30	16.3	16.3	115	6.5
CST4-400	400	26.8	44	58	8.5	34.8	16.3	16.3	120	8
CST4-500	500	30	48	56	8.5	39			124	
CST4-630	630	35	56	65	8.5	45	20.3	20.3	144	10